

## **CHURCHWATCH NEWSLETTER #1 – 2003.12.14**

As part of our release of ChurchWatch version 3 we are planning to send brief periodic emails outlining some of the new features in V3 (there are many!). We will focus on one feature at a time with each period email. We hope this will help you better understand the advancements in this new software. Remember that ChurchWatch version 1 is obsolete and version 2 will slowly be phased out.

But first, a formal announcement. White Mountain Software has officially purchased the customer list of Sey Group 2000, the makers of a DOS Church Management software package called perSEY. perSEY customers consist mainly of Catholic churches in Canada and the USA and as such we have added a new Registers Manager and a simple data import utility that will allow perSEY customers to quickly and easily bring their DOS data into ChurchWatch. This buy-out will hopefully increase the size of the ChurchWatch family significantly in the months to come...

This week the newsletter topic is the new "Membership Manager". Version 3 replaces the old Household and People Managers, which many people found confusing and awkward, with a new Membership Manager that combines the features of both and adds some new ones. To begin with, the QuickSearch list has been changed to a handy "family treeview" control so that you can quickly search by family, then by family member. Refer to the figure below. Family members are shown in authority-order, contact first, then spouse, then children. When you click on a family name, items related to the household are shown on the form - address, phone etc. When you click on a family member name, items related to that specific person are displayed on the form - for example, name, birthdate, anniversary etc. Many people found adding new families and people confusing. The Membership Manager now has buttons for adding a family or adding a person, which makes these operations obvious and simple. The photo-on-the-form feature has been brought back from version 1 as an option. You can turn off this feature in SETUP->USER PREF. but for churches that use photos, this is a very handy item to keep on the form. The picture box is capable of displaying family or individual photos depending on the current form context.

Spouse names can now be included on tax receipts on a per-household basis rather than on a per-church basis which is much less convenient. The checkbox for this feature is found on the Membership Manager form as you can see in the example below. This preference is remembered year-to-year so if you have families that prefer this you have a convenient way of making this happen year-to-year.

At the people level you can now specify if age is to be published in church directories and reports. And you will find many other little goodies in the new Membership Manager.

Remember that you can download a free Version 3 demo from our web site at [www.churchwatch.com](http://www.churchwatch.com).

From our house to yours, thank you for your business this past year and have a very blessed and restful Christmas!

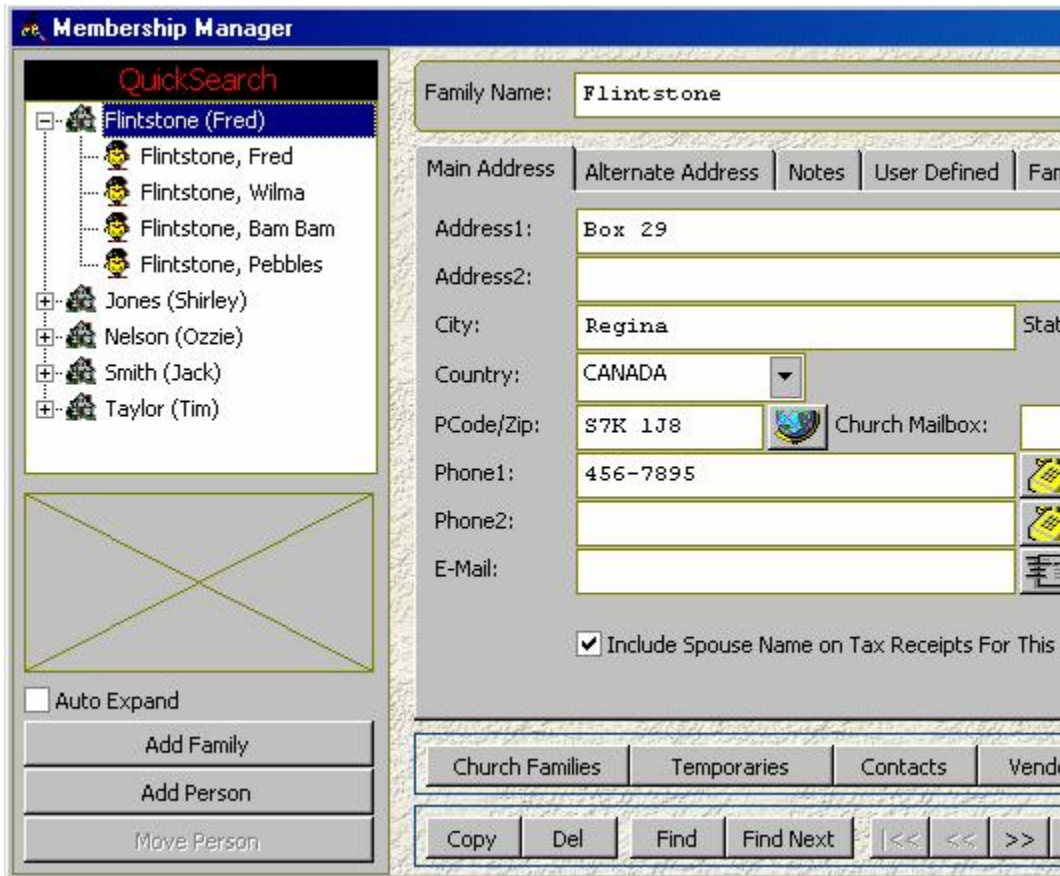


Figure 1: The new Membership Manager